

Should the energy storage lamp be turned on all the time

Do lights save energy when you leave a room?

In other words, pretty much every time you leave the room and no longer need the light, it will save you energy to turn the light off. The bulb that used the most energy during the start up phase was fluorescent tubes, like those you see in offices and shop lights.

Do light bulbs use a lot of energy during start-up?

A group of people there actually measured the amount of energy used by several different types of light bulbs during start up. In all cases, they found that light bulbs do have a spike of energy use during start up; it's significantly higher than the energy used during normal use. The spike did not last long, however.

Should you keep light bulbs on when leaving a room?

It is a common misconception that it's better to keep fluorescent lights on when leaving a room to avoid the energy used in restarting them. However, this is not the case. The energy used to restart fluorescent lights is minimal and does not outweigh the energy saved by turning them off.

Which light bulb uses the most energy during the start-up phase?

The bulb that used the most energy during the start up phase was fluorescent tubes, like those you see in offices and shop lights. Even with these, however, as long as the light won't be turned back on within 23 seconds, it's still going to save you energy to shut the light off.

Does it take more energy to shut off a light bulb?

Maybe you've heard that it takes more energy to constantly shut off and start a light bulb rather than leaving it on all day. Let's do the math! Thanks to Discovery Channel, we have a scientific answer to this question. A group of people there actually measured the amount of energy used by several different types of light bulbs during start up.

Should you turn off lights when you leave a room?

It's really not even close. If you want to save money or if you want to use less energy for the good of the environment (or both!), turn off the lights when you leave the room. Maybe you've heard that it takes more energy to constantly shut off and start a light bulb rather than leaving it on all day.

I'm completely new to storage heaters, and switched mine on for the first time on Monday. I'm on Off-Peak A tariff with Southern Electric, with 2 meters. I was just wondering if ...

Heat Loss is Not the Same as Fuel Usage. The second thing that must be understood is that the property heat loss is not the same as fuel consumption.. That is to say, if a property lost 40kW/h of heat through its walls ...

But any appliance that uses a small amount of electricity can contribute to phantom power: TVs, DVD players

Should the energy storage lamp be turned on all the time

and stereos all use a little bit of energy even when turned off. The amount of energy consumed by these ...

YES, if the starter is not properly designed, which is most of them, and all glow switch starters. See here for my recommendation and how to build your own starter: ...

Short Answer: Turn them off if you will be gone for more than about 15-20 minutes (for details keep reading). There are a few misconceptions about fluorescent lighting that keep ...

Is it safe to keep a salt lamp on all the time? The answer is yes. A salt lamp contains a low watt bulb that heats up the Salt Lamp. However, the bulb in the salt lamp is not ...

Every time a fluorescent light is turned on, a tiny amount of the coating on the electrodes is burned off. Eventually, enough coating is burned off, and the lamp fails to start. ...

The Energy Saving Trust, an organisation in the UK dedicated to energy efficiency, does not advise leaving your heating switched on all of the time. The charity has stated firmly that they do not believe in leaving your heating on all ...

generate very large instantaneous power in a short time and emit strong light. The impedance of the xenon lamp is a function of time and current density. The impedance characteristic of the ...

LED lights are made to last a long time and can be kept on 24/7 without any problems. This is because they don't produce much heat, so there's no risk of them overheating or causing a fire. Just like any other electrical ...

Step Two: Get Everything in Place. The second step is getting everything in place. Find a sunny spot to place our solar light in. A solar light does not need direct sunlight but it does need to be in an area where it will get full ...

In other words, from a strict energy-conservation standpoint, it's almost always beneficial to shut off fluorescents when leaving the room--the start-up energy is offset by the ...

For the standard incandescent light bulb, it would take less than one second of use to make up for the spike of energy when the bulb is first ...

When you keep the lamp on all the time it is not going to "sweat" - but if it is really humid and the lamp is off for a prolonged period of time - yes - it will "sweat". My opinion is that the design should be where the electrical parts ...

Do chicks need dark time or should I keep the heat lamp on them all of the time? I have a 125 watt bulb on

Should the energy storage lamp be turned on all the time

them and it seems awfully bright for them to sleep. They didn't have ...

Antoni Singer, founder of Breezer Freezer, shares, "Many electrical appliances consume a small amount of energy even when turned off, a phenomenon known as "standby power" or "phantom load ...

Instead use a mercury vapor bulb for heat light and UV all in one, or use a long tube style florescent light along with the basking lamp you already have. ... You can simply ...

Should the Heater Be Left on All the Time or Turned Off? The debate of whether to leave the heating on all day or not has been discussed for years. Some professionals say it is okay to keep it on, while websites like Money Saving ...

They are also energy efficient: Such efficiency has reached the point where most PCs place themselves in sleep mode if they remain idle for a certain period of time. So your ...

There is no definitive answer to this question, as it will depend on a number of different factors. Generally speaking, however, most light bulbs are designed to last for a certain period of time ...

Led lights are more power-saving than other bulbs (source: quora) Long Lifespan. An expert from Samsung confirmed that LED lights can provide approximately 50,000 hours of ...

What to do if dusk till dawn light stays on all the time? You can fix your light turning off all the time by overriding the sensors manually. Turn the lights off and leave it that way for a while. Turn it on after a few minutes and it ...

Should a Hot Tub Be Left on All the Time? Yes; you should leave it on 24/7. Frequently turning it off & on will raise your electricity costs. ... You need to leave it on all the time. It takes more energy to heat the hot tub than it ...

Biosafety Cabinets are often equipped with germicidal ultraviolet light (UV) lamps that radiate light at a wavelength of 254nm (UV-C band) to decontaminate the interior surface. ...

You can easily test the sensors on your solar light by putting your hand on top of it. If the light comes on, the sensor is working correctly. If not, your solar light isn't working because the solar panel isn't doing its job right. Do ...

Energy saving myths (and how we've debunked 'em) There are a lot of urban myths and "quick tricks" for saving money on your energy bills. Many are a bit rubbish but some do offer simple and cheap ways to reduce your energy ...

Should the energy storage lamp be turned on all the time

Published Date: October 17, 2020 Last Updated on June 22, 2023 by Camper Front. Should I leave my RV inverter on all the time? While the answer is NO as it'll seem inappropriate to leave your RV inverter on all the time, it also ...

Our specialist energy advisors tackle some common energy-saving myths... It's better to leave the hot water heater on all the time, rather than turning it on and off. This is a very common energy saving myth. But in fact, you really don't ...

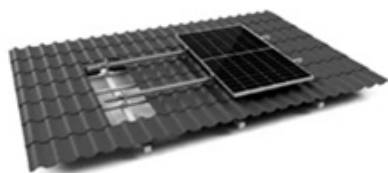
Energy storage is a technology that holds energy at one time so it can be used at another time. Building more energy storage allows renewable energy sources like wind ...

Salt lamps are generally safe to leave on all night, as they don't use an exorbitant amount of electricity. In fact, most salt lamps only require 15 watts or less energy to operate, which is the same as a small light bulb. As ...

Incandescent lights should be turned off whenever they are not needed, because they are the least efficient type of lighting. 90% of the energy they use is given off as heat, and only about ...

All UVC lamps essentially consist of a quartz envelope containing Mercury and other gases and electrodes. When the lamp is struck, the energy between the electrodes excites the Mercury ...

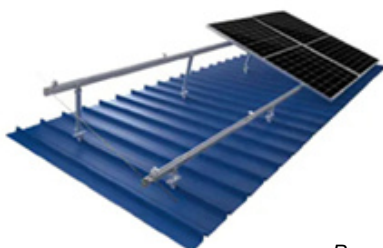
Web: <https://eastcoastpower.co.za>



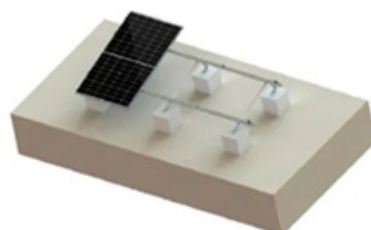
TILE ROOF SOLAR MOUNTING SYSTEM



STANDING SEAM ROOF SYSTEM



ADJUSTABLE TILT FLAT ROOF SYSTEM



TRIANGLE FLAT ROOF SYSTEM